

Installing JBuilder 9 Personal from the Student CD-ROM

1. Insert the Student CD-ROM to your computer's CD-ROM drive. The welcome page is automatically displayed, as shown in Figure 1. If the page is not displayed, open it from the Window's desktop, as shown in Figure 2.

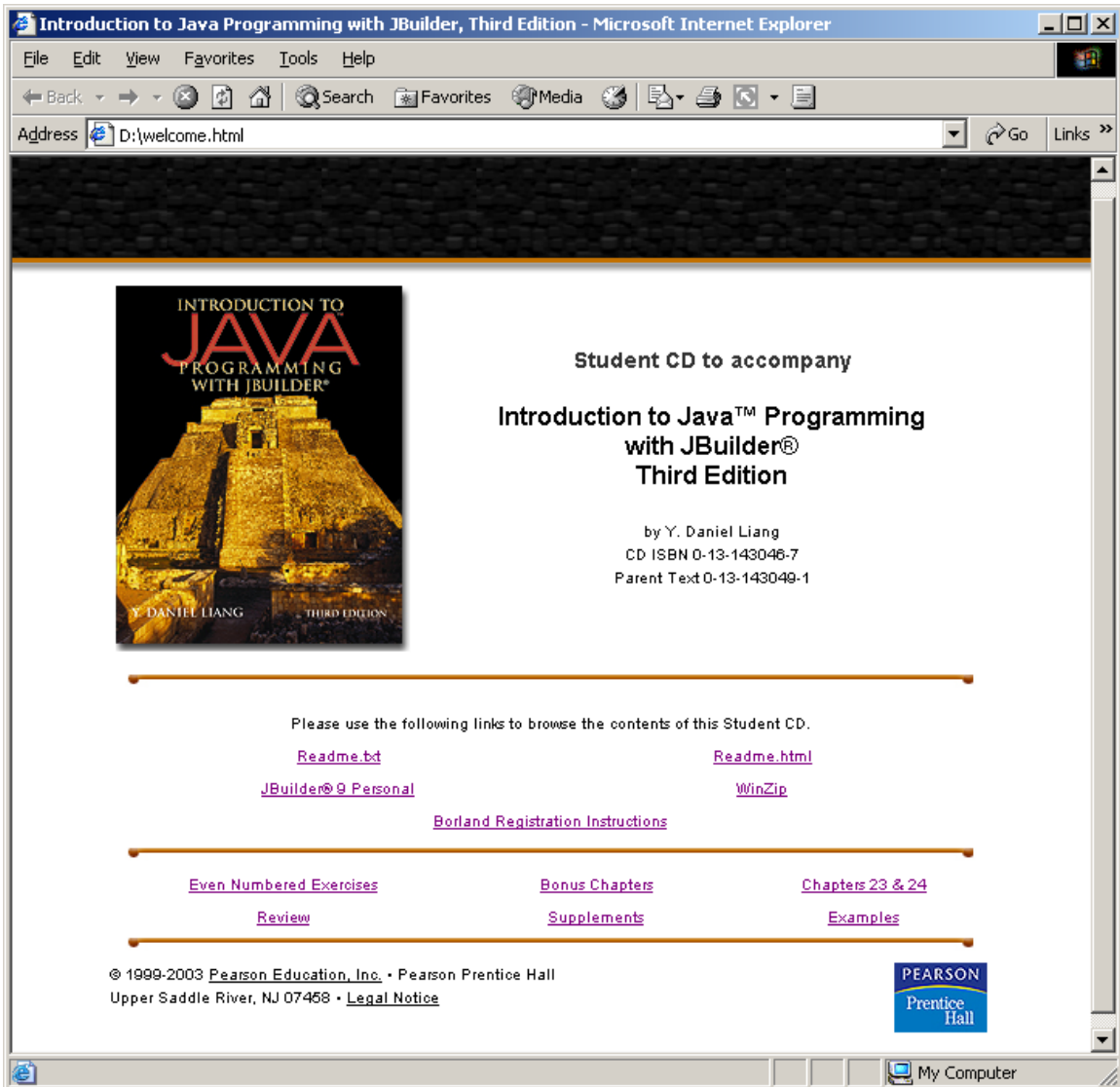


Figure 1



Figure 2

2. Click *JBuilder 9 Personal* in the welcome page to display the JBuilder 9 installation files for Windows, Linux, and Solaris, as shown in Figure 3.

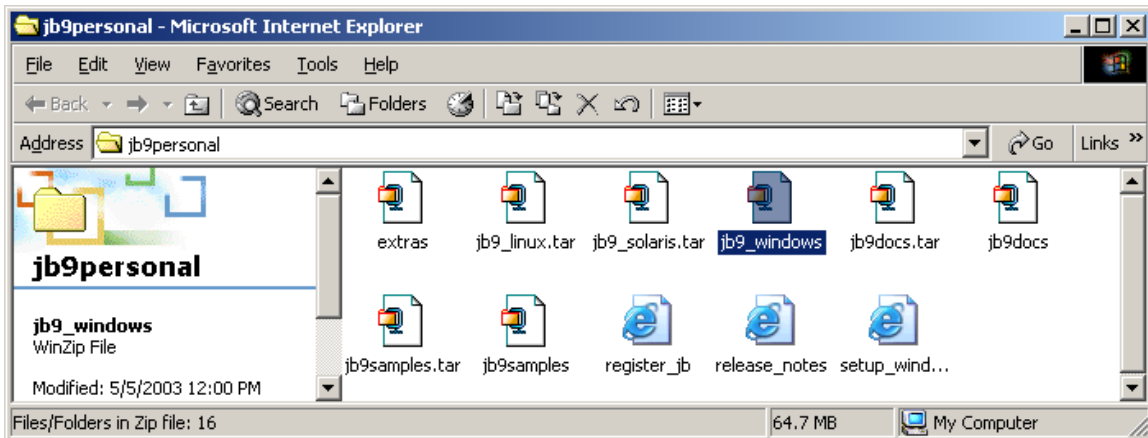


Figure 3

3. To install JBuilder 9 on Windows 95, Windows NT, Windows 2000, and Windows XP, double click *jb9_windows* to display WinZip, as shown in Figure 4. (If you don't have Winzip, you can install by clicking Winzip from the welcome page in Figure 1)

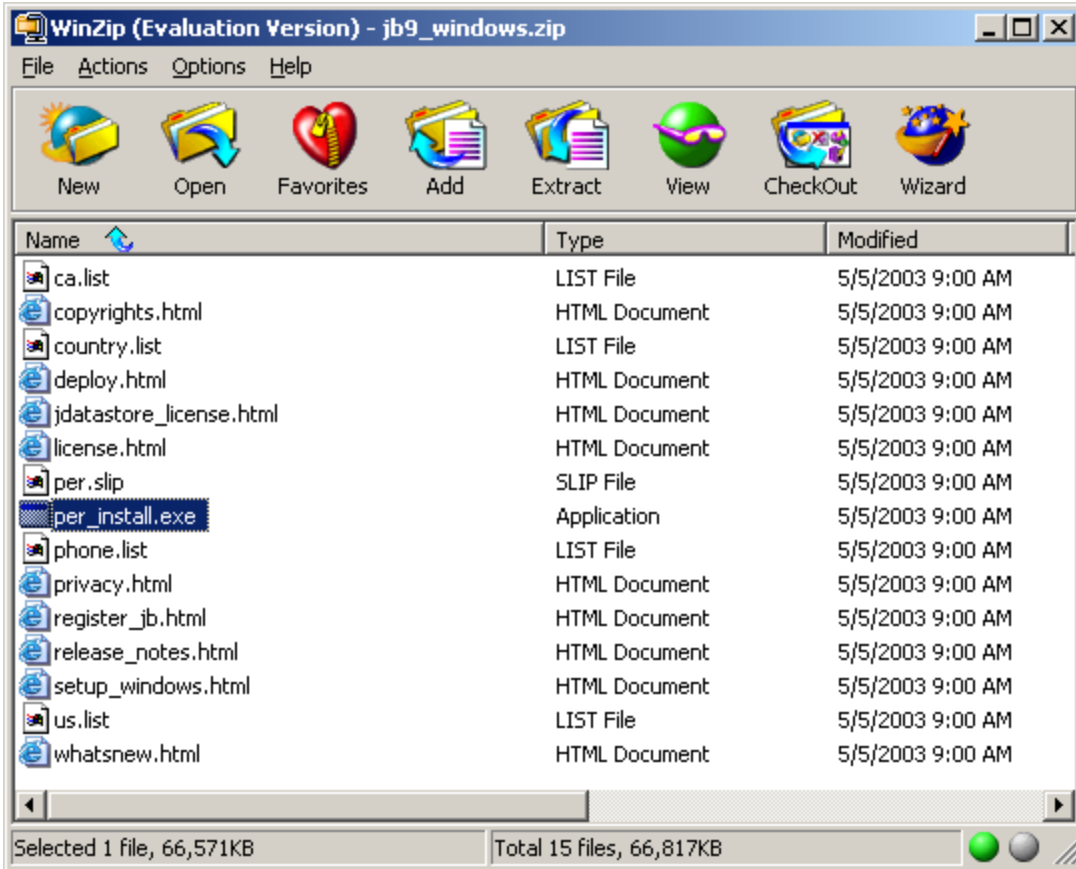


Figure 4

4. Double click *per_install.exe* from Winzip in Figure 4 to extract the file and launch it automatically, as shown in Figure 5. The Borland JBuilder 9 Personal dialog box is displayed in Figure 6. Install JBuilder 9 Personal with the default options.

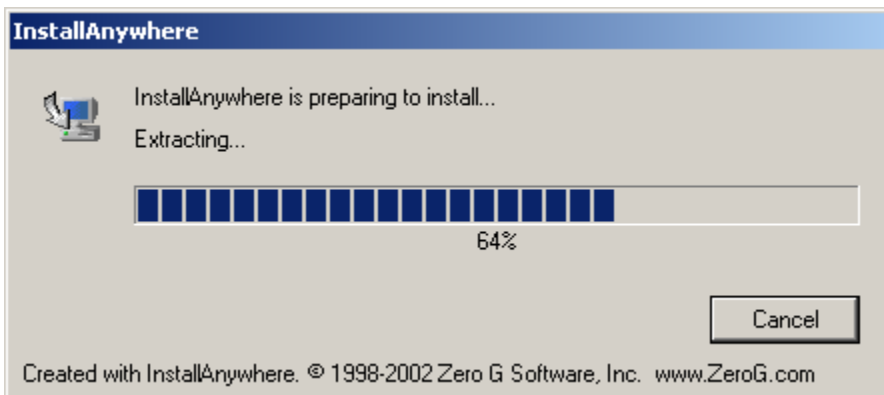


Figure 5

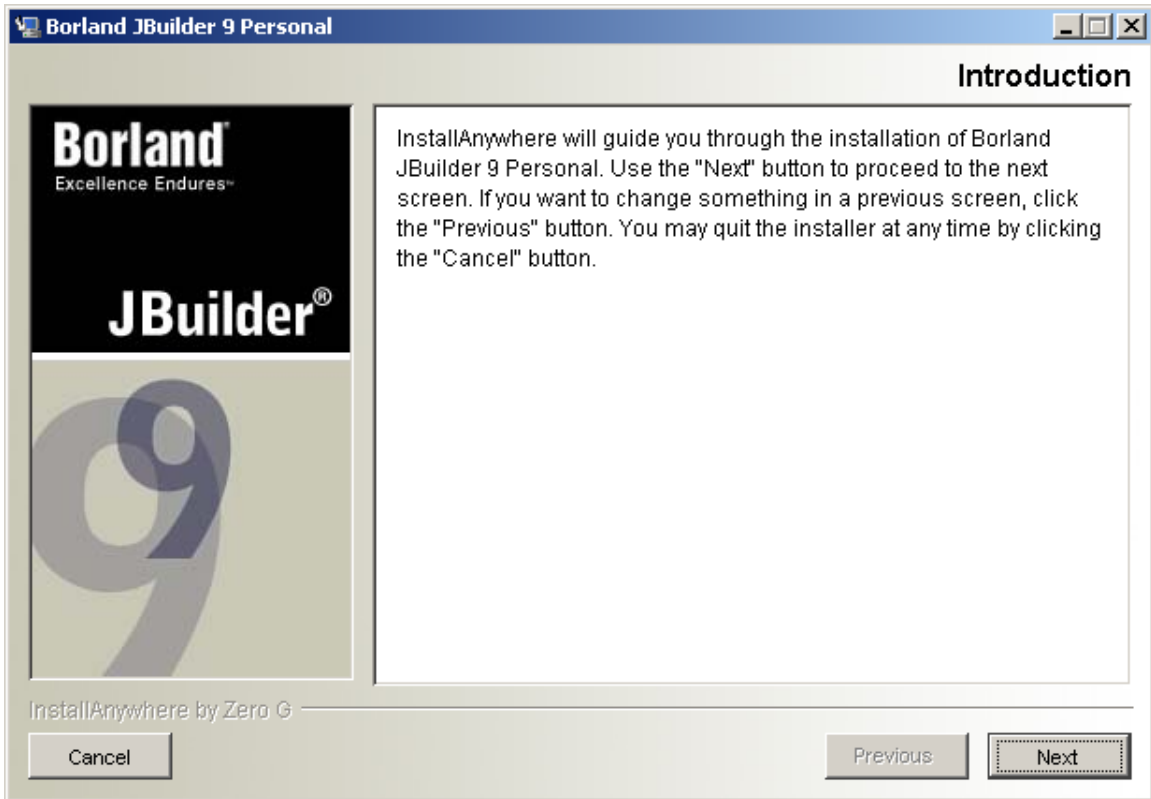


Figure 6

5. You can then install JBuilder 9 Personal documentation by double-clicking the *jb9docs* icon in Figure 3, which opens the files in Winzip, as shown in Figure 7. Double-click *doc_install.exe* in Figure 7 to install JBuilder 9 Personal documentation.

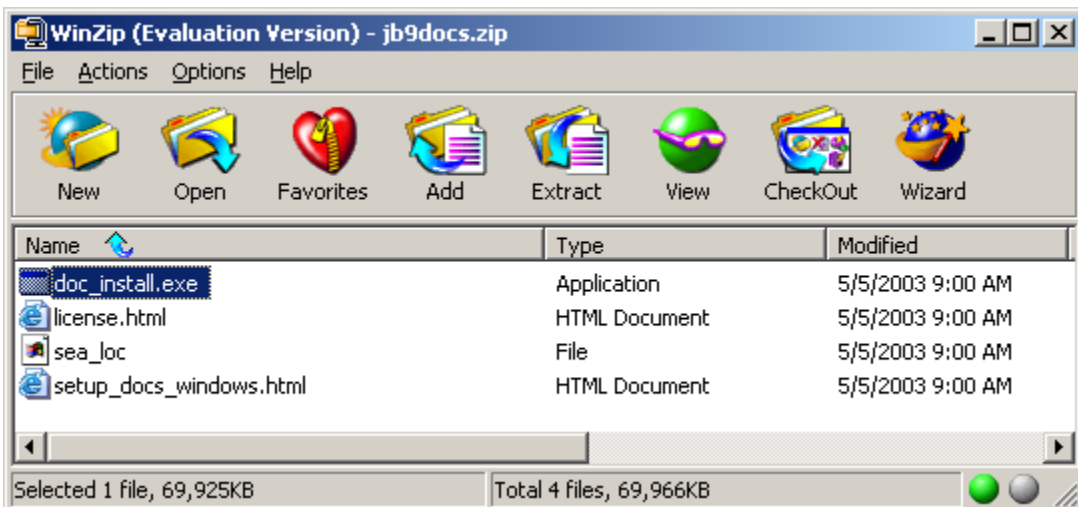


Figure 7

6. You may also install JBuilder 9 Personal samples by double-clicking the *jb9samples* icon in Figure 3, which

opens the sample files in Winzip, as shown in Figure 8. Double-click *smp_install.exe* in Figure 8 to install JBuilder 9 Personal documentation.

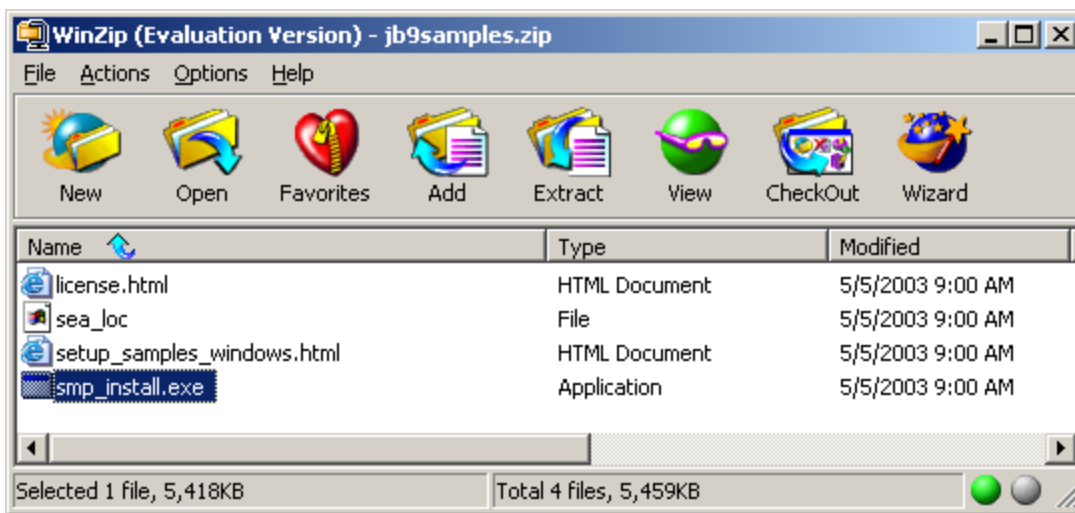


Figure 8

7. After the installation completed, follow the instructions in http://www.cs.armstrong.edu/liang/introjb3e/borlandjb9_req.pdf in obtain JBuilder 9 Personal Activation File named reg276.txt. Store the file in the appropriate location according Step 9 in http://www.cs.armstrong.edu/liang/introjb3e/borlandjb9_req.pdf.
8. Now you can now use JBuilder 9 Personal.